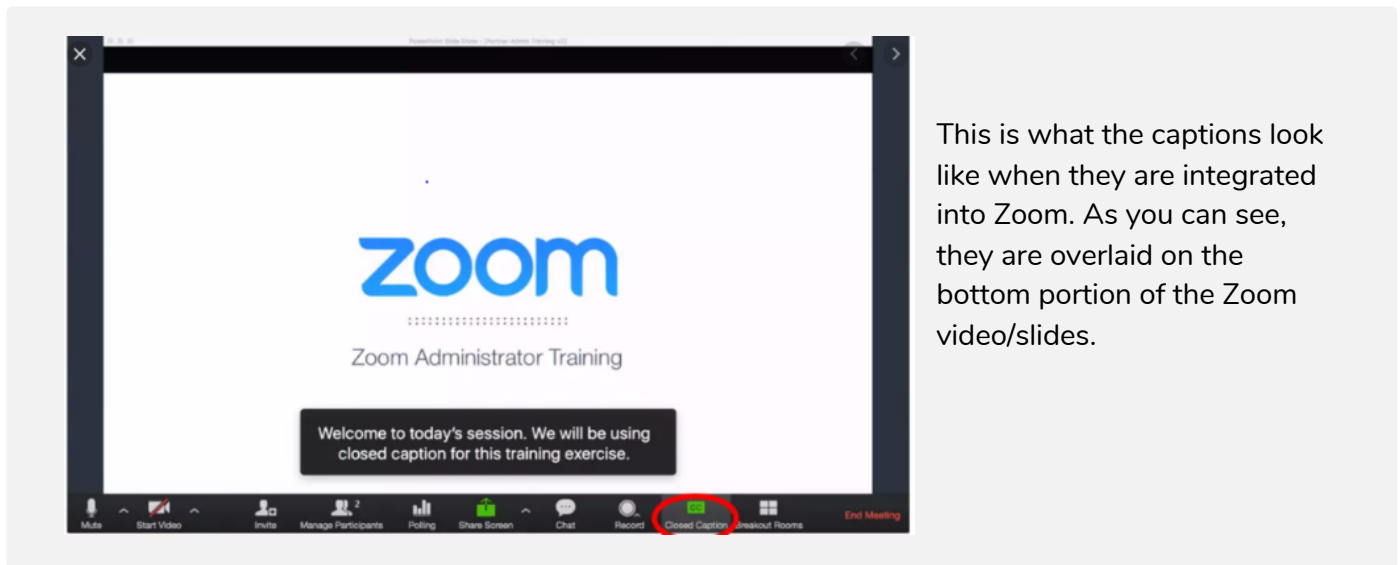
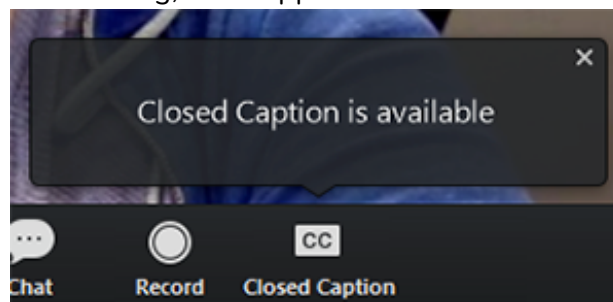


ZOOM PARTICIPANT- HOW TO TURN ON CAPTIONS

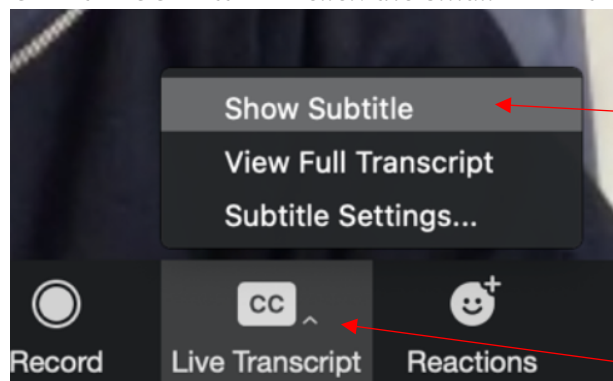


As a participant to turn on the captions:

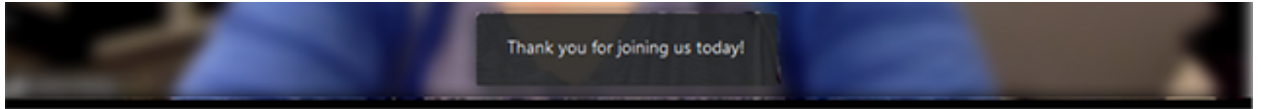
1. When closed captions are in use, you will see a notification.
 - In a meeting, it will appear in the controls at the bottom of your screen.



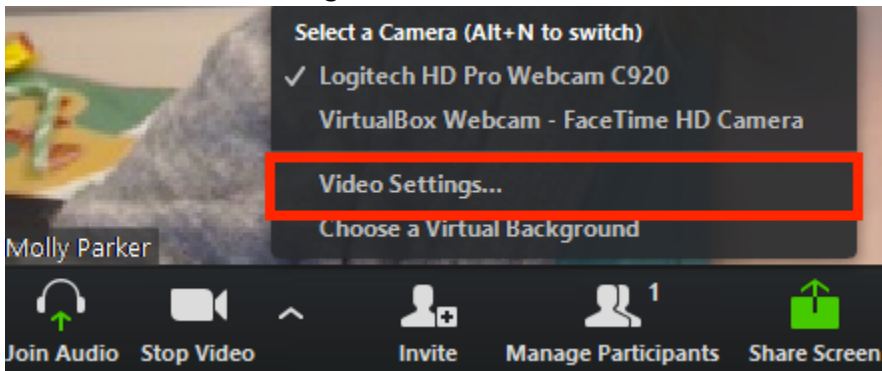
- Click the CC button or **click the small ^** and then click “Show Subtitle.”



2. You will see the captioning at the bottom of your screen.




3. Optional: If you need to adjust the caption size, click on the arrow next to stop/start video and choose Video Settings.



4. Click on Accessibility.
5. Move the slider to adjust the caption size.

Closed Caption

Closed Caption Font Size:  Normal Medium Large

